

## What's happening near here?

North London Waste Authority (NLWA) are undertaking a new scheme to replace the Energy from Waste facility to improve how energy is recovered for heat and power from north London's waste. The works to prepare the site for construction have begun with creating a temporary area to store and fabricate construction materials on the regional park.

The scheme comprises:

- A new Energy Recovery Facility
- A Resource Recovery Facility, which will manage some of the waste which comes into the site, including a new Reuse and Recycling Centre which will be for use by the public and local businesses
- EcoPark House which will contain an office block and visitor reception centre also offering waste related education

Land just north of the North Circular Road will be used during the construction period for the storage of machinery and materials to support the scheme's construction activities on Edmonton EcoPark over the next 10 years. Once the whole project is completed, this area will be restored.

For more information on the project, why the works are needed and to read about our safety procedures, visit [northlondonheatandpower.london](http://northlondonheatandpower.london)

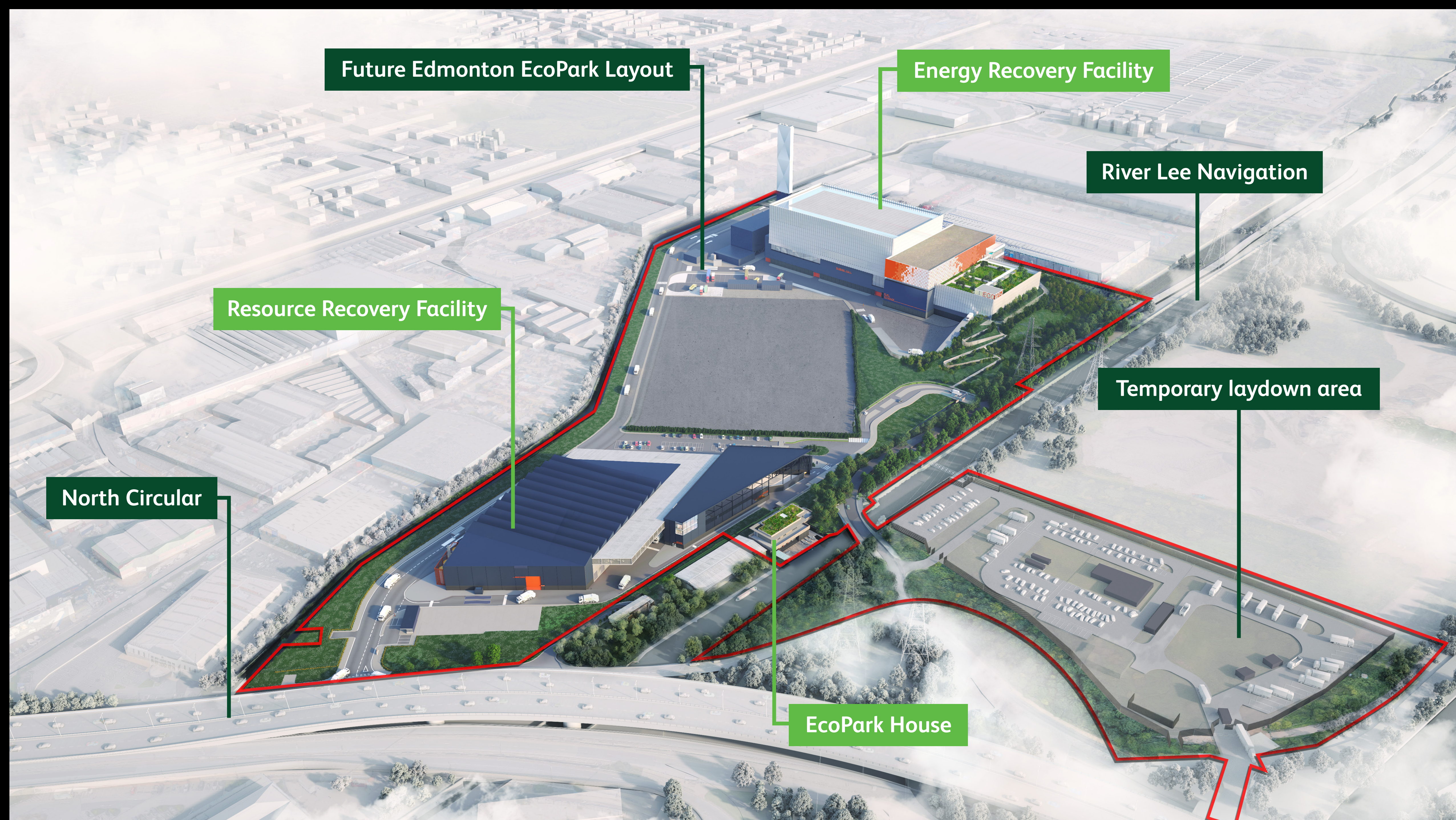
## Contact Details

Email: [info@northlondonheatandpower.london](mailto:info@northlondonheatandpower.london)

Telephone: 020 8489 3940

## Site Hours

Construction activity will usually take place between 8am and 6pm on weekdays (Monday-Friday excluding bank holidays) and 8am to 1pm on Saturdays. We will provide advance notice to neighbours if any work outside these times is required. We will work with our contractors to ensure they meet the Enfield Code of Construction Practice and other industry standards. Our contractors will register with, and adhere to, the Considerate Constructors Scheme which encourages best practice beyond statutory requirements. For more information please visit [ccscheme.org.uk](http://ccscheme.org.uk)



Indicative aerial image of the future layout for the Edmonton EcoPark alongside the temporary laydown area on Lee Valley Regional Park.