

North London Heat and Power Project

Welcome to our second construction newsletter.

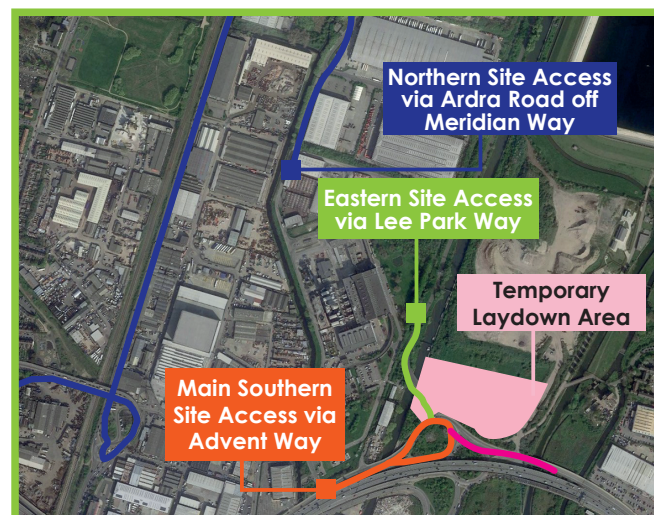
We (North London Waste Authority) are responsible for managing waste collected by the north London Boroughs of Barnet, Camden, Enfield, Hackney, Haringey, Islington and Waltham Forest. We're dedicated to reducing waste and increasing recycling. We also need to manage waste that can't be recycled. To do this in a way that avoids landfilling we're replacing the existing plant at Edmonton EcoPark as it's due to reach the end of its operational life.

We've made significant progress to prepare the site for construction in the last 6 months. We've been setting up a **temporary 'laydown' area to store and make construction materials next to the River Lee Navigation**. Once construction is finished, we'll return this land back to its natural state.

Shortly **we will begin strengthening the bridge on Lee Park Way** across the River Lee Navigation to make way for a new access road onto the site from the east. The towpath under the bridge will be closed for part of this time and a floating walkway will be in place. Signs are in place and further email notifications will be sent to those who sign up for updates through our website northlondonheatandpower.london.

In August we appointed the **Enfield-based company Galldris Construction Ltd to build a new access road to the north of the site**. These additional access points will help manage vehicle movements during construction and operation of the facility.

There are three routes affected by our construction traffic: Ardra Road off A1055 Meridian Way, Lee Park Way, and Advent Way. These are laid out in the map below. We expect minimal additions to traffic along these routes for the current initial works to prepare the site for construction and will provide advance notice of any changes to these traffic routes.



- | | |
|----------------------|---------------------------|
| Eastern Site Access | Main southern Site Access |
| Northern Site Access | Temporary Laydown Area |

Looking to construction in the future....

Later this year we'll appoint contractors to divert the sewers under the site and to construct the facilities we'll use to increase recycling and prepare waste for energy recovery. Construction for these works is scheduled to begin in 2020.

A **Resource Recovery Facility** will become the hub for recovering resources and increasing recycling on the southern part of the site. This will include a **Reuse and Recycling Centre** open to the public.

Works will also take place to build **EcoPark House** to provide education space, offices and a visitor centre next to the River Lee Navigation.

You can also expect to see the replacement **Energy Recovery Facility** taking shape in the next ten years. Find out why it's so important for north London to invest in this replacement now at northlondonheatandpower.london/project

2,500 job opportunities created during construction and operation boosting the local economy, including over **100 apprenticeships** and **225 skills training opportunities**.

Considerate constructors

All of our contractors are members of the Considerate Constructors Scheme and are committed to being positive members of the local community. Normal construction working hours are 8am – 6pm Monday – Friday and 8am -1pm Saturdays. We will provide advance notice to neighbours if any work outside these times is required.

Our replacement facility will

Generate **78 megawatts** of low carbon power from waste which can supply electricity and heat for up to **127,000 homes**.

Save the equivalent of **140,000 tonnes of Co₂** every year using energy recovery rather than disposing to landfill. That's like taking **60,000 cars off the road**.

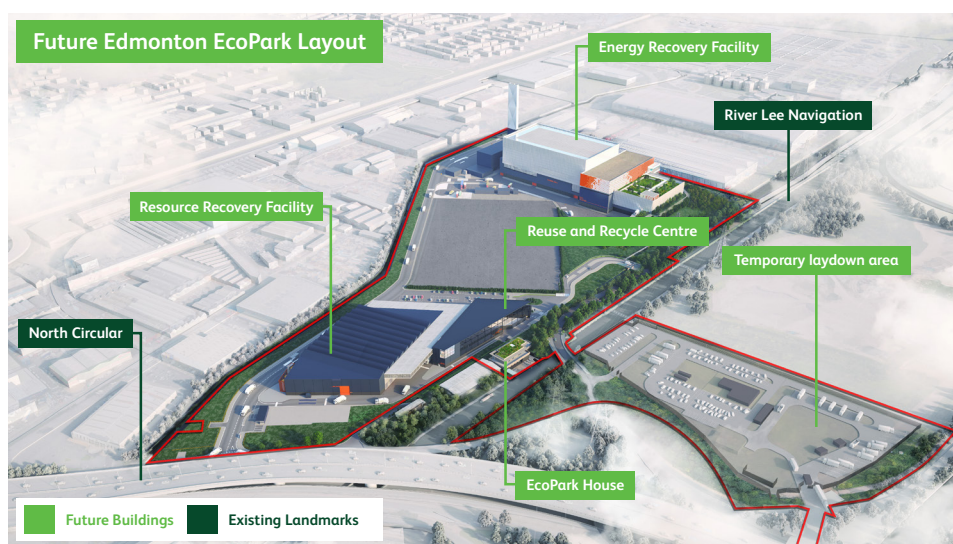
Improve air quality in north London with a current plant that operates **20% better** than the safe standards of nitrogen oxide and the new facility performing at more than **60% better**.

Check out our updated website

Now that construction has started, we've updated our website to provide a construction timeline, new Frequently Asked Questions and a gallery which shows how the Project is likely to look when complete.

We'll be updating our website regularly as the Project progresses and you can stay informed by visiting

northlondonheatandpowerproject.london



Recycle week:
23-29 September

NLWA is proud to support Recycle Week – a national initiative that highlights the importance of recycling. Look out for our recycling activity across the 23-29 September on wiseuptowaste.org.uk/recycleweek



W northlondonheatandpower.london

020 8489 3940

@NLHPP

f North London Heat and Power

info@northlondonheatandpower.london