



# Community Liaison Group

29 October 2019

## Agenda

1. Introductions
2. Update from CLG member
3. EcoPark South works update
4. Construction updates
5. Community engagement update
6. Questions

# Update from CLG members



- Updates from members of the Community Liaison Group



# Future Edmonton EcoPark Layout

Resource Recovery Facility

Energy Recovery Facility

River Lee Navigation

Reuse and Recycle Centre

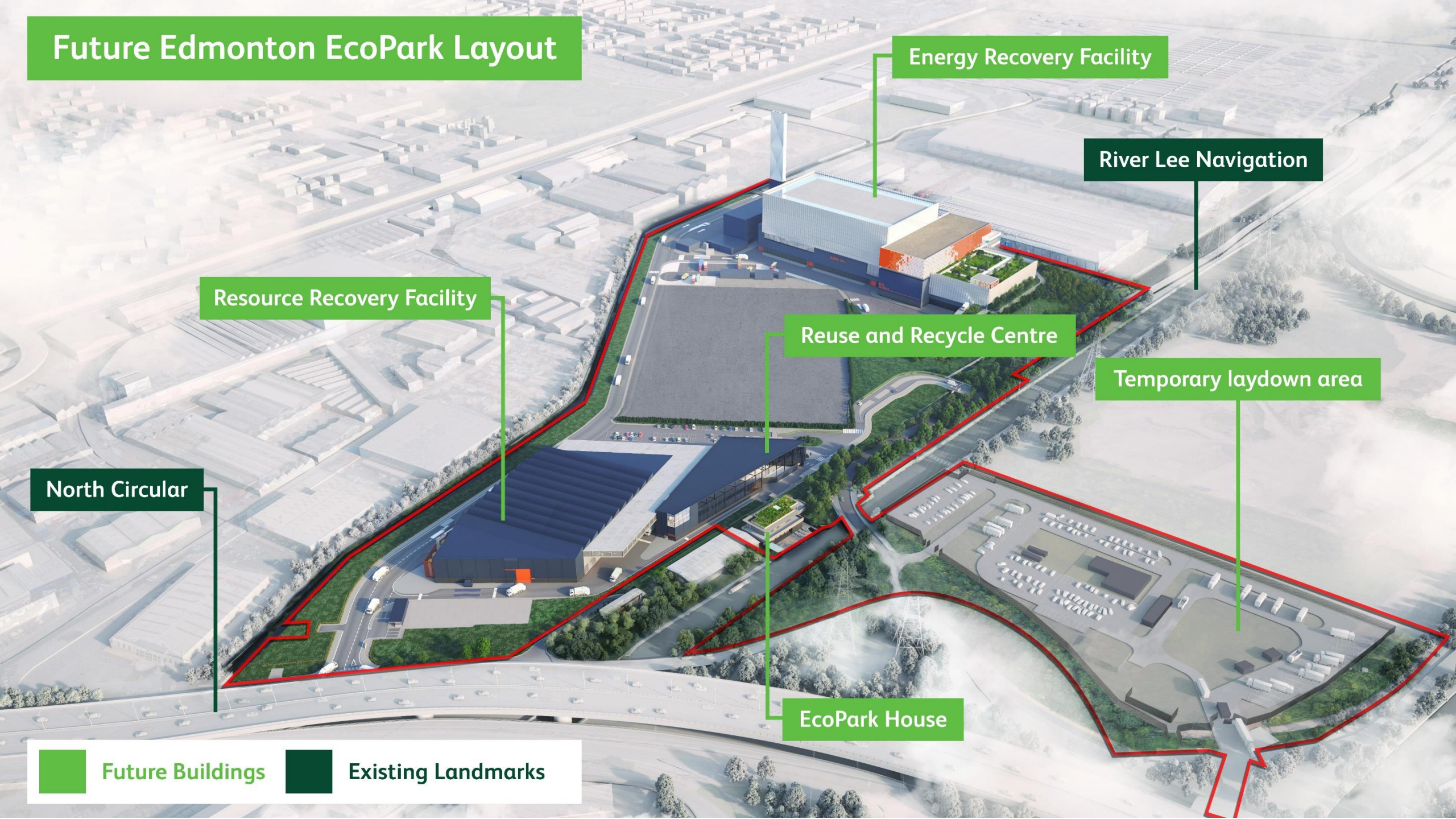
Temporary laydown area

North Circular

EcoPark House

Future Buildings

Existing Landmarks





# EcoPark South works update

## Resource Recovery Facility (RRF)

- Reuse and Recycling centre for public use
- The public and businesses can bring their recycling and bulky waste



## EcoPark House

- Education and visitors' centre
- Information about recycling resources, heat and power
- Space for Edmonton Sea Cadets

# EcoPark South works update



## Market Information Day

- Preparing for the construction of:
  - RRF construction and associated utilities
  - Construction of EcoPark House





## Laydown Area East

- Significant progress over summer to clear the site and set up the laydown area
- The laydown area will be used to store and make construction materials to be transported onto the site
- Completion of Laydown Area East is expected in December 2019



## Laydown Area West and Eastern Access

- Preparatory works will begin shortly
- Lee Park Way bridge will be jacked and the bearings replaced
- Temporary walkway in place until March 2020





## Deephams Farm Road

- In August Enfield-based construction company Galldris Construction Ltd were appointed
- Upgrade to Deephams Farm Road, to the south of Ardra Road, to allow us to better manage construction traffic

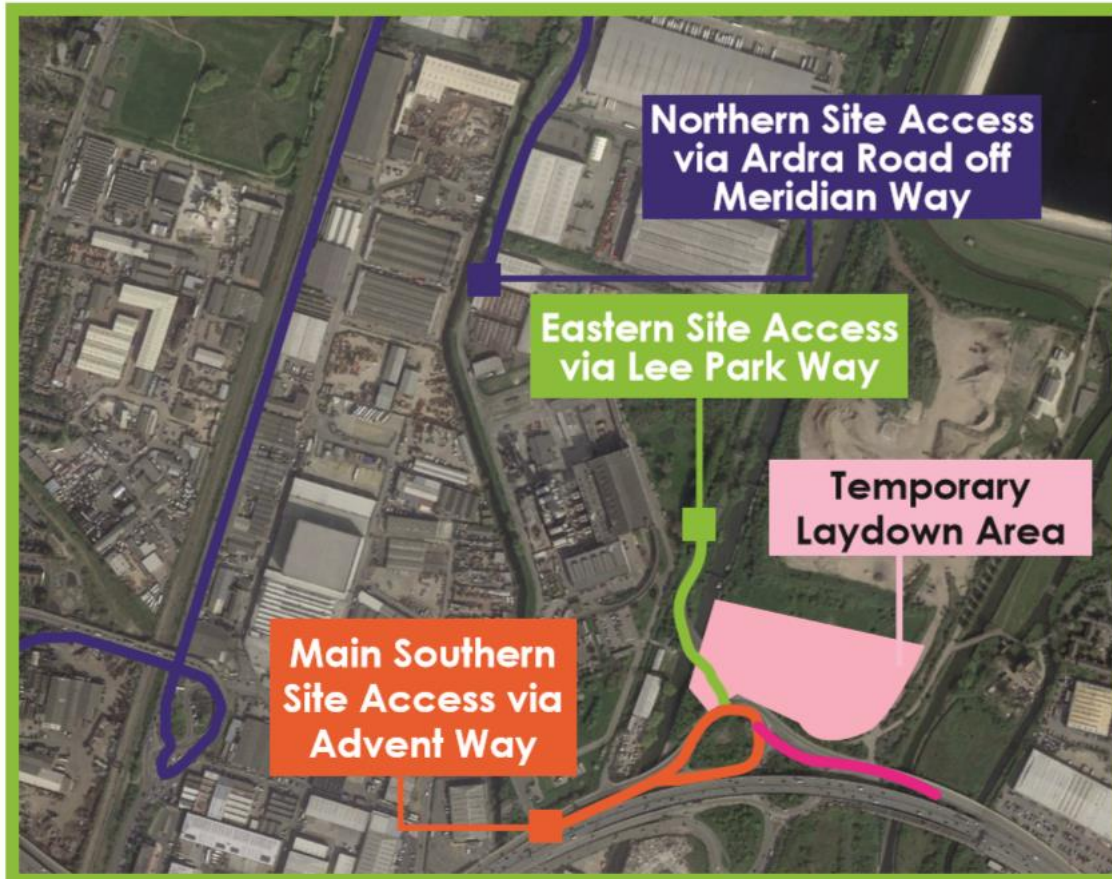




## Sewer Diversion works

- Onsite works to divert the sewers
- Construction newsletter as advanced warning
- Due to commence in early 2020





## Traffic and Transport

New Transport Co-ordinator:

- Transport Plan Co-ordination
- Detailed work associated with travel plan
- Checking routes for construction traffic

# Working with the community



- Award winning *Wise up to Waste* initiative saves around 10,000 tonnes of resources each year
- North London low-plastic zones
- Repair cafes





# Working with the community



## Roadshow events



## Community newsletter and e-newsletter

Issue 2 | September 2019

North London Heat and Power Project

Welcome to our second construction newsletter.

We (North London Waste Authority) are responsible for managing waste collected by the north London Boroughs of Barnet, Camden, Enfield, Hackney, Haringey, Islington and Waltham Forest. We're dedicated to reducing waste and increasing recycling. We also need to manage waste that can't be recycled. To do this in a way that avoids landfilling we're replacing the existing plant at Edmonton EcoPark as it's due to reach the end of its operational life.

We've made significant progress to prepare the site for construction in the last 6 months. We've been setting up a temporary 'laydown' area to store and make construction materials next to the River Lee Navigation. Once construction is finished, we'll return this land back to its natural state.

Shortly we will begin strengthening the bridge on Lee Park Way across the River Lee Navigation to make way for a new access road onto the site from the east. The towpath under the bridge will be closed for part of this time and a floating walkway will be in place. Signs are in place and further email notifications will be sent to those who sign up for updates through our website [northlondonheatandpower.london](http://northlondonheatandpower.london).

In August we appointed the Enfield-based company Galdris Construction Ltd to build a new access road to the north of the site. These additional access points will help manage vehicle movements during construction and operation of the facility.

There are three routes affected by our construction traffic: Adra Road off A1055 Meridian Way, Lee Park Way, and Advent Way. These are laid out in the map below. We expect minimal additions to traffic along these routes for the current initial works to prepare the site for construction and will provide advance notice of any changes to these traffic routes.

Looking to construction in the future....

Later this year we'll appoint contractors to divert the sewers under the site and to construct the facilities we'll use to increase recycling and prepare waste for energy recovery. Construction for these works is scheduled to begin in 2020.

A Resource Recovery Facility will become the hub for recovering resources and increasing recycling on the southern part of the site. This will include a Reuse and Recycling Centre open to the public.

Works will also take place to build EcoPark House to provide education space, offices and a visitor centre next to the River Lee Navigation. You can also expect to see the replacement Energy Recovery Facility taking shape in the next ten years. Find out why it's so important for north London to invest in this replacement now at [northlondonheatandpower.london/project](http://northlondonheatandpower.london/project)

2,500 job opportunities created during construction and operation boosting the local economy, including over 100 apprenticeships and 225 skills training opportunities.

Considerate constructors

All of our contractors are members of the Considerate Constructors Scheme and are committed to being positive members of the local community. Normal construction working hours are 8am – 6pm Monday – Friday and 8am – 1pm Saturdays. We will provide advance notice to neighbours if any work outside these times is required.

Check out our updated website

Now that construction has started, we've updated our website to provide a construction timeline, new Frequently Asked Questions and a gallery which shows how the Project is likely to look when complete. We'll be updating our website regularly as the Project progresses and you can stay informed by visiting [northlondonheatandpowerproject.london](http://northlondonheatandpowerproject.london)

Our replacement facility will

Generate 78 megawatts of low carbon power from waste which can supply electricity and heat for up to 127,000 homes. Save the equivalent of 140,000 tonnes of CO<sub>2</sub> every year using energy recovery rather than disposing to landfill. That's like taking 60,000 cars off the road.

Improve air quality in north London with a current plant that operates 20% better than the safe standards of nitrogen oxide and the new facility performing at more than 60% better.

Future Edmonton EcoPark Layout

Recycle week: 23-29 September

NLWA is proud to support Recycle Week – a national initiative that highlights the importance of recycling. Look out for our recycling activity across the 23-29 September on [wiseupwaste.org.uk/recycleweek](http://wiseupwaste.org.uk/recycleweek)

[northlondonheatandpower.london](http://northlondonheatandpower.london)  
 020 8489 3940  
 @NLHPP  
 info@northlondonheatandpower.london

# Working with the community



- New study assessing the carbon impact of the new facility:
  - *The new facility will save the equivalent of 215,000 tonnes of CO2 every year compared to alternative of sending to landfill*
  - *Failure to replace the existing facility could result in 700,000 tonnes of rubbish going to landfill which is the same carbon impact as adding 110,000 cars on the road every year*
  - *Part of the overall drive towards Net Zero by generating up to 78 megawatts of low carbon energy in the form of heat and power*

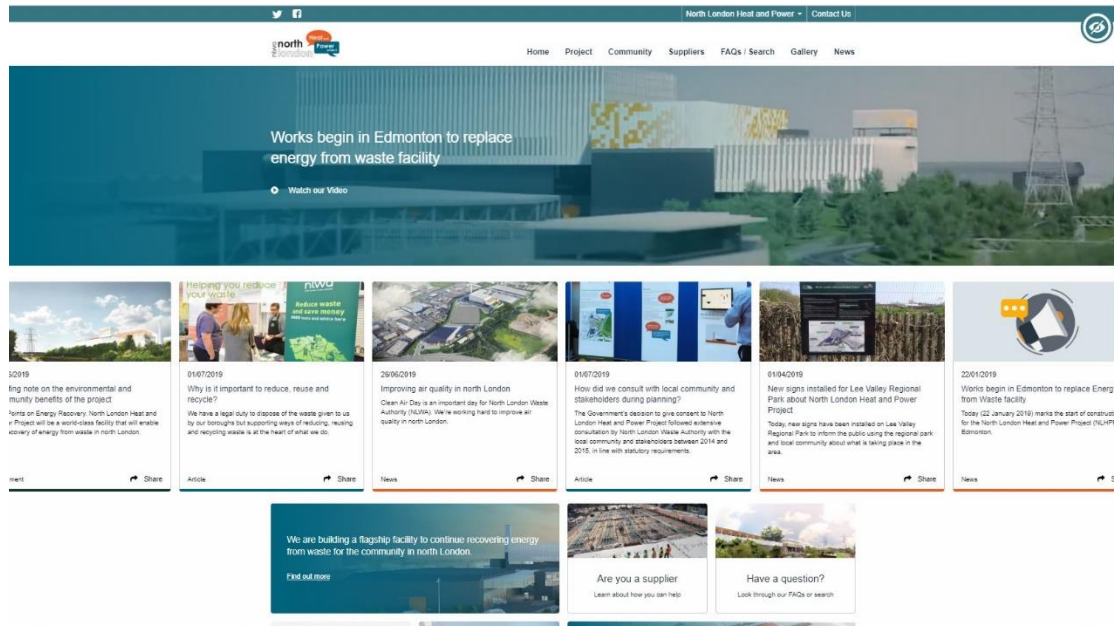




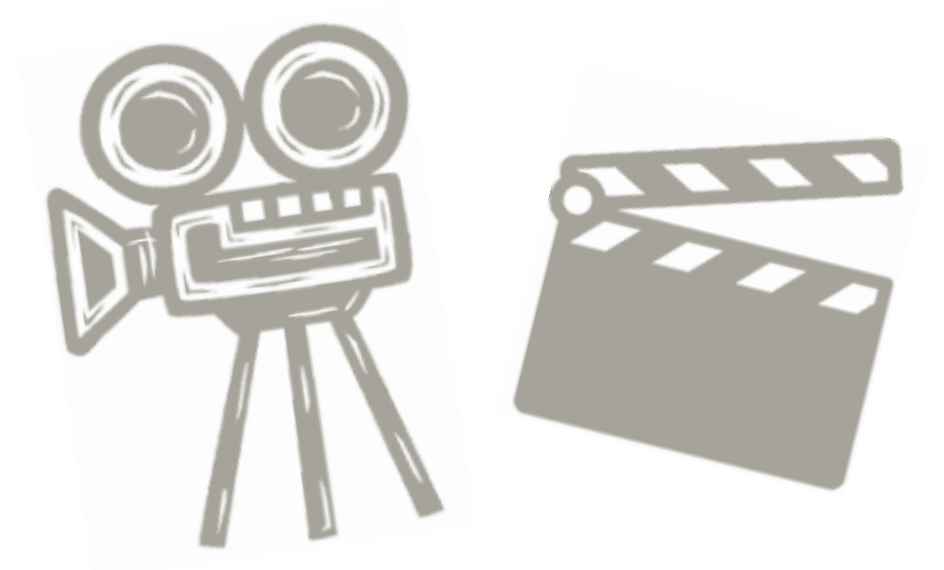
# Working with the community



Website – [www.northlondonheatandpower.london](http://www.northlondonheatandpower.london)



Video



# Working with the community



- The new facility will create over 2,500 job opportunities during construction and operation
- We are supporting an impressive training programme for over 100 apprenticeships and 225 skills training opportunities
- We encourage local businesses to come forward for contracts
- Working with Enfield Council





Questions?